

DRUM SONGS 4

"Moanin"
Art Blakey

Musical notation for "Moanin" by Art Blakey. The piece is in 4/4 time. The notation consists of a single staff with a treble clef and a key signature of one flat (Bb). The melody is composed of eighth notes, with four groups of three eighth notes beamed together, each marked with a '3' and a bracket. The piece begins with a double bar line and ends with a double bar line.

"Lullaby for
Realville"
Sun Ra

Musical notation for "Lullaby for Realville" by Sun Ra. The piece is in 4/4 time. The notation consists of a single staff with a treble clef and a key signature of one flat (Bb). The melody is composed of eighth notes, with four groups of three eighth notes beamed together, each marked with a '3' and a bracket. There are also two groups of two eighth notes beamed together, each marked with a '+' and a bracket. The piece begins with a double bar line and ends with a double bar line.

"A Call for
All Demons"
Sun Ra

Swing

Musical notation for "A Call for All Demons" by Sun Ra. The piece is in 4/4 time. The notation consists of a single staff with a treble clef and a key signature of one flat (Bb). The melody is composed of eighth notes, with four groups of three eighth notes beamed together, each marked with a '3' and a bracket. The piece begins with a double bar line and ends with a double bar line.

"Take the
A Train"
Duke Ellington

Musical notation for "Take the A Train" by Duke Ellington. The piece is in 4/4 time. The notation consists of a single staff with a treble clef and a key signature of one flat (Bb). The melody is composed of eighth notes, with four groups of three eighth notes beamed together, each marked with a '3' and a bracket. There are also two groups of two eighth notes beamed together, each marked with a '+' and a bracket. The piece begins with a double bar line and ends with a double bar line.

"Ain't That Love"
Ray Charles

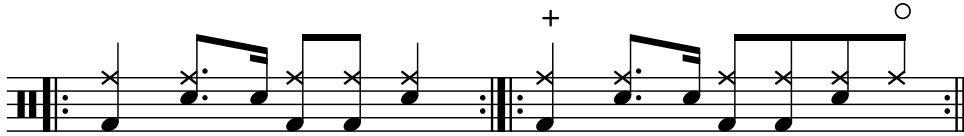
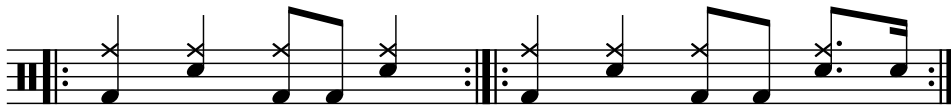
Musical notation for "Ain't That Love" by Ray Charles. The piece is in 4/4 time. The notation consists of a single staff with a treble clef and a key signature of one flat (Bb). The melody is composed of eighth notes, with four groups of three eighth notes beamed together, each marked with a '3' and a bracket. The piece begins with a double bar line and ends with a double bar line.

"Bring it on Up"
Loleatta Holloway

Musical notation for "Bring it on Up" by Loleatta Holloway. The piece is in 4/4 time. The notation consists of a single staff with a treble clef and a key signature of one flat (Bb). The melody is composed of eighth notes, with four groups of three eighth notes beamed together, each marked with a '3' and a bracket. There is also one group of two eighth notes beamed together, marked with a '+' and a bracket. The piece begins with a double bar line and ends with a double bar line.

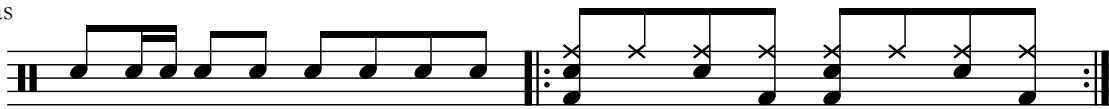
"Where Do We Go"

Solange



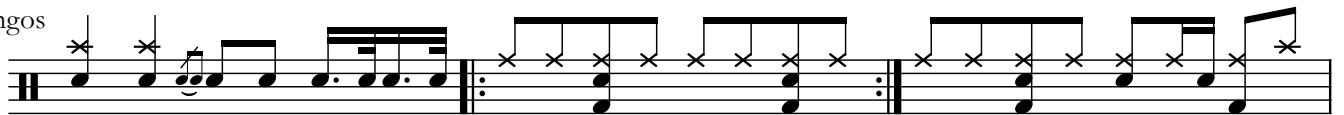
"Nowhere to Run"

Martha Reeves
and the Vandellas



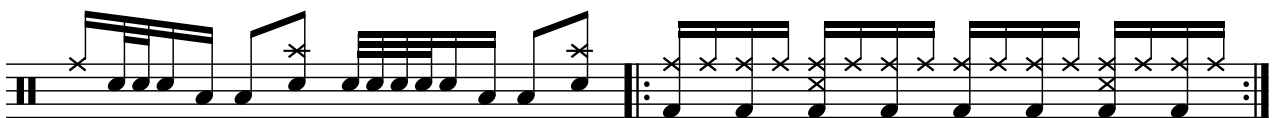
"Fisherman"

The Congos



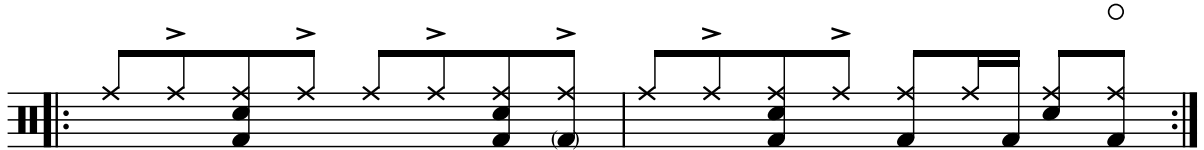
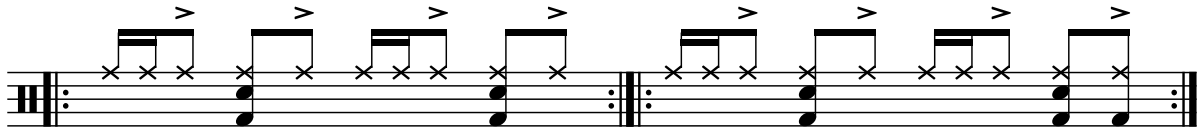
"Children Crying"

The Congos



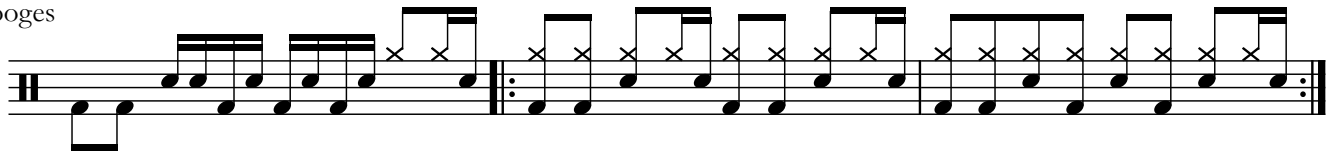
"54-46 Was My Number"

Toots and the
Maytals



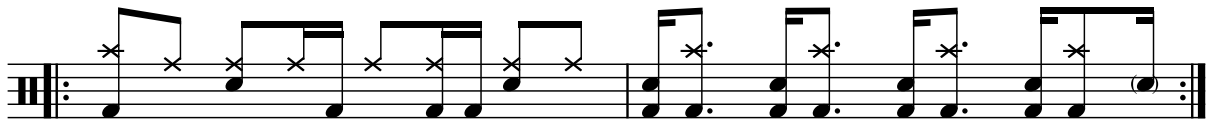
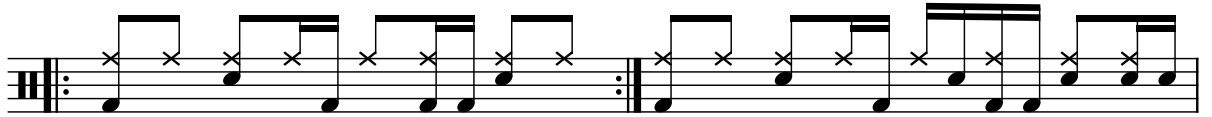
"I Wanna Be Your Dog"

The Stooges



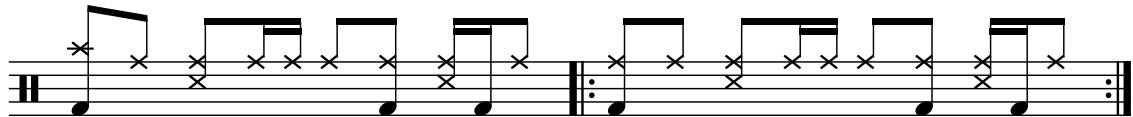
"When the Levee Breaks"

Led Zeppelin



"High and Dry"

Radiohead



"Signed, Sealed,
Delievered"
Stevie Wonder

Musical notation for the first system of "Signed, Sealed, Delievered" by Stevie Wonder. It features a single staff with a treble clef and a key signature of one flat. The melody consists of eighth and quarter notes, with some notes marked with an 'x' above them, likely indicating fretted notes on a guitar.

Musical notation for the second system of "Signed, Sealed, Delievered" by Stevie Wonder. This system includes a double bar line with repeat dots on both sides, indicating a repeated section of the melody.

"Thank You"
Sam & Dave

Musical notation for the first system of "Thank You" by Sam & Dave. It features a single staff with a treble clef and a key signature of one flat. The notation includes a first ending bracket labeled "1." and a second ending bracket labeled "2.", indicating different ways to conclude the phrase.

Musical notation for the second system of "Thank You" by Sam & Dave. This system continues the melody and includes a double bar line with repeat dots on both sides.

"Cold Sweat"
James Brown

Musical notation for the first system of "Cold Sweat" by James Brown. It features a single staff with a treble clef and a key signature of one flat. Above the staff, there are pairs of symbols: a circle followed by a plus sign, indicating specific rhythmic or articulation markings.

Musical notation for the second system of "Cold Sweat" by James Brown. This system continues the melody and includes a double bar line with repeat dots on both sides. Like the first system, it features pairs of circle-plus symbols above the staff.

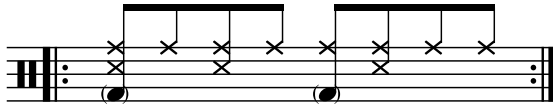
"Move on Up"
Curtis Mayfield

Musical notation for the first system of "Move on Up" by Curtis Mayfield. It features a single staff with a treble clef and a key signature of one flat. The notation includes a double bar line with repeat dots on both sides.

"Corcovado"

Antonio Carlos

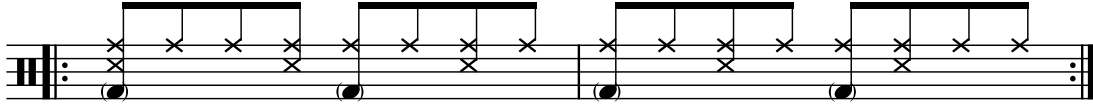
Jobim



"Agua de Beber"

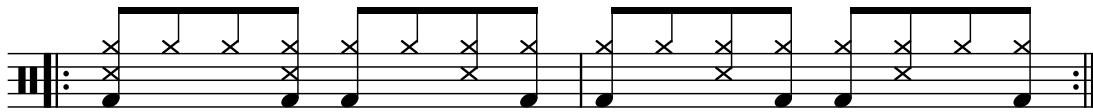
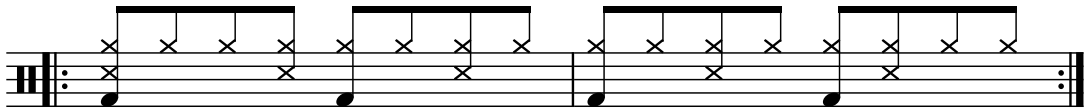
Antonio Carlos

Jobim



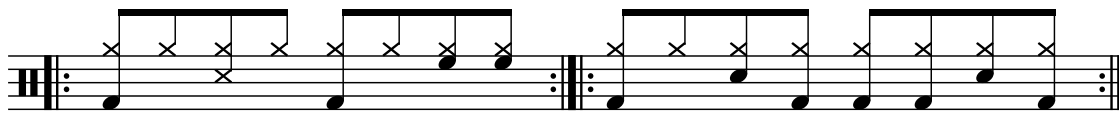
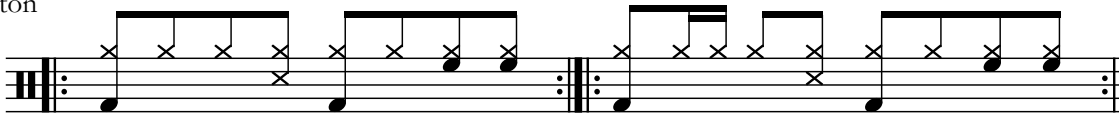
"Eque"

Duke Ellington



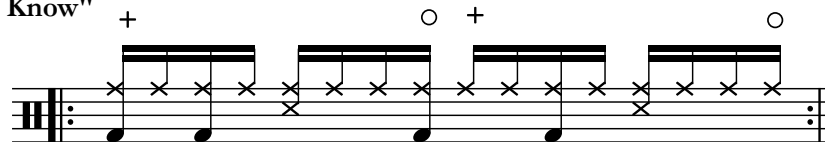
"Chico Cuadrado"

Duke Ellington



"Didn't Cha Know"

Erykah Badu



"Spottieottiedopalicious"

Outkast

○ +

Musical notation for the first system of 'Spottieottiedopalicious'. It features a treble clef, a key signature of one flat (Bb), and a 4/4 time signature. The notation consists of a series of eighth notes with 'x' marks above them, indicating a specific rhythmic pattern. The notes are grouped into pairs of beamed eighth notes. The first system contains 16 notes, ending with a double bar line and repeat dots.

"He's Got Your Love"

Isley Brothers

Musical notation for the first system of 'He's Got Your Love'. It features a treble clef, a key signature of one flat (Bb), and a 4/4 time signature. The notation consists of a series of eighth notes with 'x' marks above them, indicating a specific rhythmic pattern. The notes are grouped into pairs of beamed eighth notes. The first system contains 16 notes, ending with a double bar line and repeat dots.

Musical notation for the second system of 'He's Got Your Love'. It features a treble clef, a key signature of one flat (Bb), and a 4/4 time signature. The notation consists of a series of eighth notes with 'x' marks above them, indicating a specific rhythmic pattern. The notes are grouped into pairs of beamed eighth notes. The second system contains 16 notes, ending with a double bar line and repeat dots.

"Ain't No Sunshine"

Bill Withers

Musical notation for the first system of 'Ain't No Sunshine'. It features a treble clef, a key signature of one flat (Bb), and a 4/4 time signature. The notation consists of a series of eighth notes with 'x' marks above them, indicating a specific rhythmic pattern. The notes are grouped into pairs of beamed eighth notes. The first system contains 16 notes, ending with a double bar line and repeat dots.

Musical notation for the second system of 'Ain't No Sunshine'. It features a treble clef, a key signature of one flat (Bb), and a 4/4 time signature. The notation consists of a series of eighth notes with 'x' marks above them, indicating a specific rhythmic pattern. The notes are grouped into pairs of beamed eighth notes. The second system contains 16 notes, ending with a double bar line and repeat dots.

"Superstition"

Stevie Wonder

lightly swung 16ths

Musical notation for the first system of 'Superstition'. It features a treble clef, a key signature of one flat (Bb), and a 4/4 time signature. The notation consists of a series of eighth notes with 'x' marks above them, indicating a specific rhythmic pattern. The notes are grouped into pairs of beamed eighth notes. The first system contains 16 notes, ending with a double bar line and repeat dots.

"I Zimbra"

Talking Heads

○ +

Musical notation for the first system of 'I Zimbra'. It features a treble clef, a key signature of one flat (Bb), and a 4/4 time signature. The notation consists of a series of eighth notes with 'x' marks above them, indicating a specific rhythmic pattern. The notes are grouped into pairs of beamed eighth notes. The first system contains 16 notes, ending with a double bar line and repeat dots.

"Lovely Day"

Bill Withers

Musical notation for the first system of "Lovely Day" by Bill Withers. It features a single staff with a treble clef and a key signature of one flat. The notation includes a series of eighth notes with 'x' marks above them, indicating fretted notes on a guitar. The piece is in 4/4 time and consists of two measures, each with a repeat sign.

"Can You Get To That"

Funkadelic

Musical notation for the first system of "Can You Get To That" by Funkadelic. It features a single staff with a treble clef and a key signature of one flat. The notation includes a series of eighth notes with 'x' marks above them, indicating fretted notes on a guitar. The piece is in 4/4 time and consists of two measures, each with a repeat sign.

Musical notation for the second system of "Can You Get To That" by Funkadelic. It features a single staff with a treble clef and a key signature of one flat. The notation includes a series of eighth notes with 'x' marks above them, indicating fretted notes on a guitar. The piece is in 4/4 time and consists of two measures, each with a repeat sign.

"Rock Steady"

Aretha Franklin

Musical notation for the first system of "Rock Steady" by Aretha Franklin. Above the staff are rhythmic markers: a circle followed by a plus sign, repeated five times. The notation includes a series of eighth notes with 'x' marks above them, indicating fretted notes on a guitar. The piece is in 4/4 time and consists of two measures, each with a repeat sign.

Musical notation for the second system of "Rock Steady" by Aretha Franklin. Above the staff are rhythmic markers: a circle followed by a plus sign, repeated twice. The notation includes a series of eighth notes with 'x' marks above them, indicating fretted notes on a guitar. The piece is in 4/4 time and consists of two measures, each with a repeat sign.

Musical notation for the third system of "Rock Steady" by Aretha Franklin. The notation includes a series of eighth notes with 'x' marks above them, indicating fretted notes on a guitar. The piece is in 4/4 time and consists of two measures, each with a repeat sign.

Musical notation for the fourth system of "Rock Steady" by Aretha Franklin. Above the staff are rhythmic markers: a circle followed by a plus sign, repeated four times. The notation includes a series of eighth notes with 'x' marks above them, indicating fretted notes on a guitar. The piece is in 4/4 time and consists of two measures, each with a repeat sign.